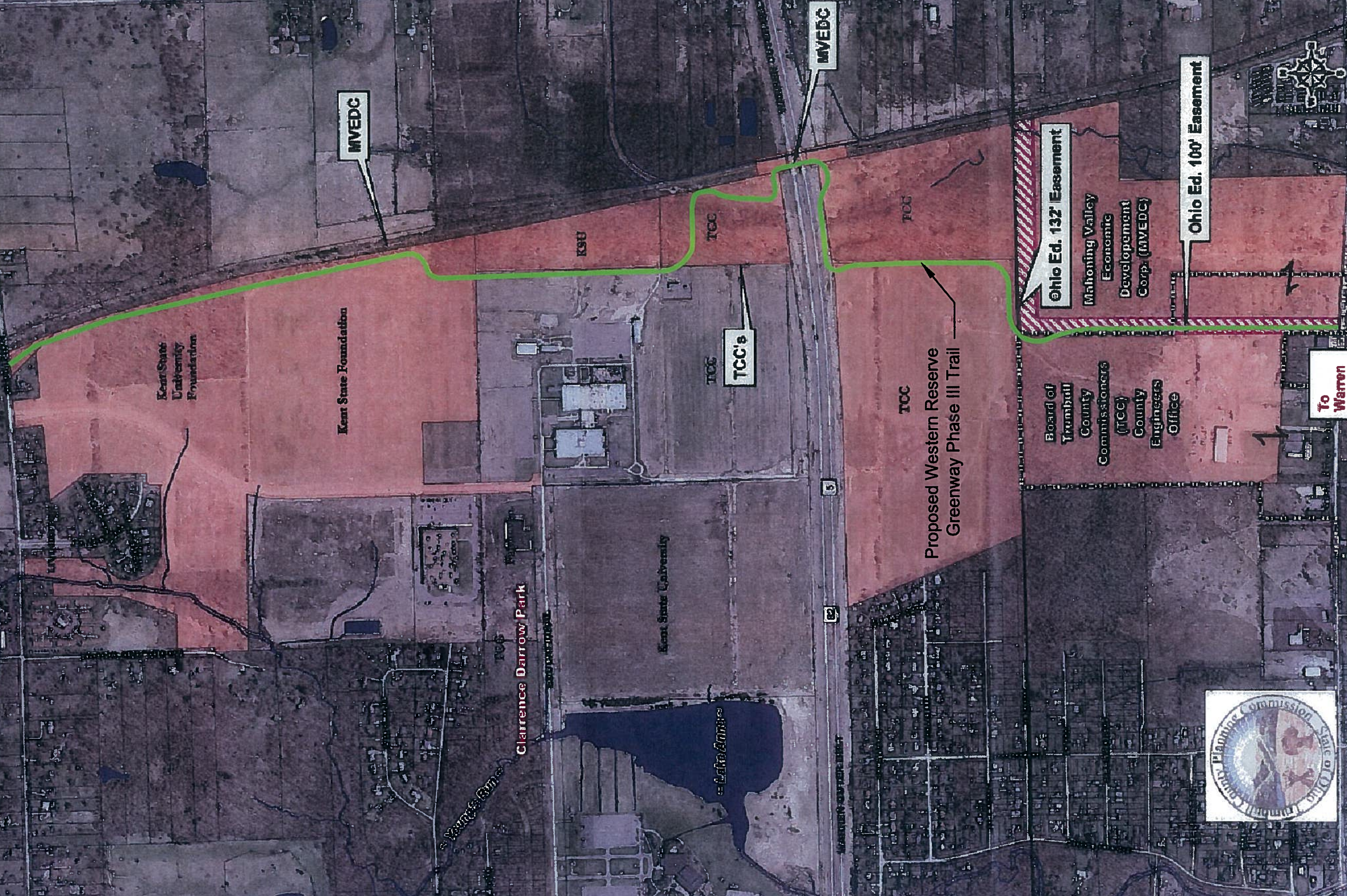


**PROPOSED ROUTE STUDY AREA FOR PHASE III OF THE WRGW**

Trail System is a Part of the Great Ohio Lake to River Greenway Trail

Western Reserve Greenway - "Open"



Kent State University Foundation

Kent State Foundation

Clarence Darrow Park

Kent State University

Proposed Western Reserve Greenway Phase III Trail

Board of Trumbull County Commissioners (TCC) County Engineers Office

Ohio Ed. 132' Easement  
Mahoning Valley Economic Development Corp. (MVEDC)

Ohio Ed. 100' Easement

To Warren Bikeway



Trumbull County assumes no legal responsibility for the information contained on this map.  
Source: Trumbull County GIS Department, Trumbull County Planning Commission.  
Prepared by: Trish A. Neuhoff, Trumbull County Planning Commission, March 2009.

0 275 550 1,100 1,650 2,200 Feet

DATE: 9/18/09